



2012-08-23 VER.2

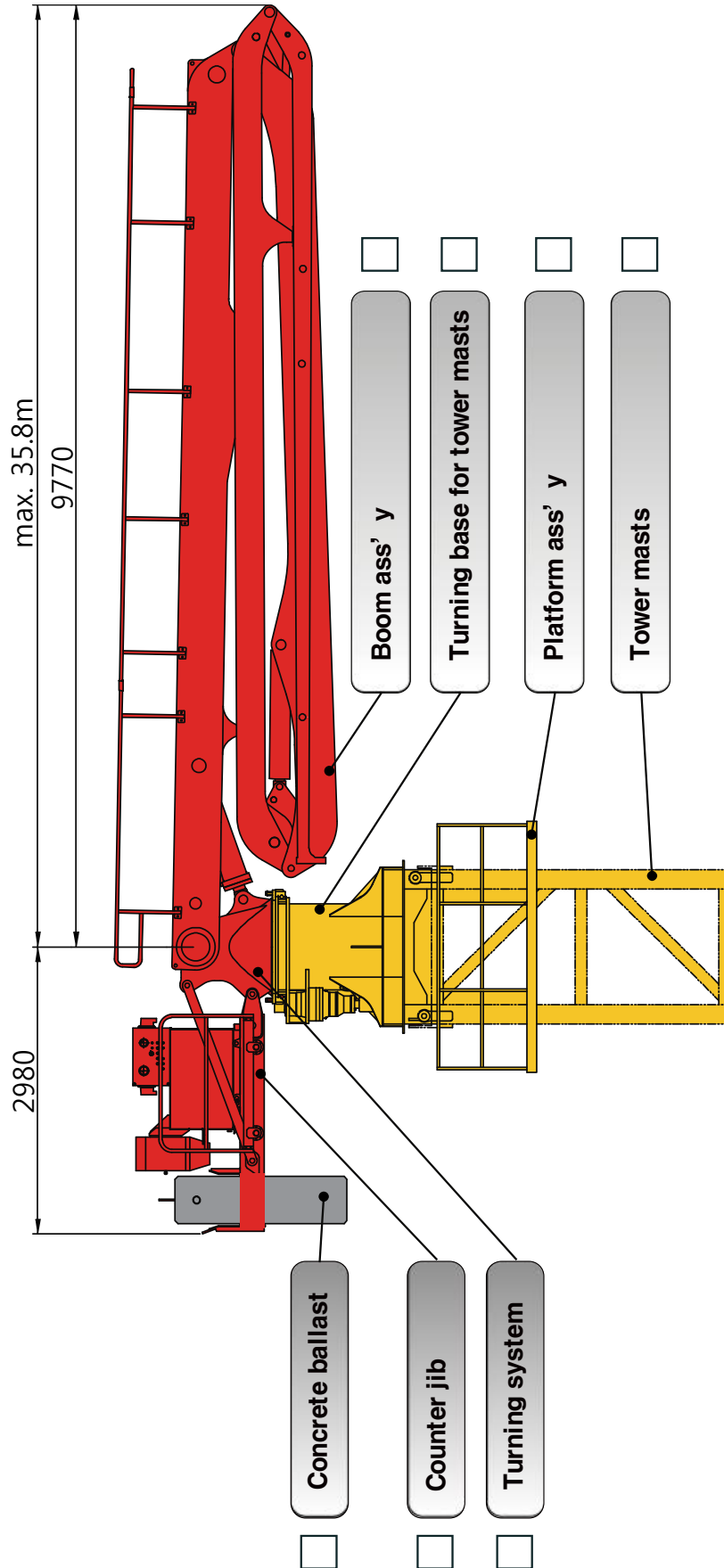
# DATA SHEET

PLACING BOOM



## JB-T36H

### Placing System on Tower Mast 36M 4 Sections R & Fold Designed Boom



\* All technical data are theoretical values and Specification are subject to change without prior notice.  
 \* JUNJIN HEAVY INDUSTRY CO.LTD 33 OSEONRI GEUMWANGUEP EUMSEONGGUN CHUNBUK, KOREA WWW.JUNJIN.COM



2012-08-23 VER.2

# DATA SHEET

PLACING BOOM



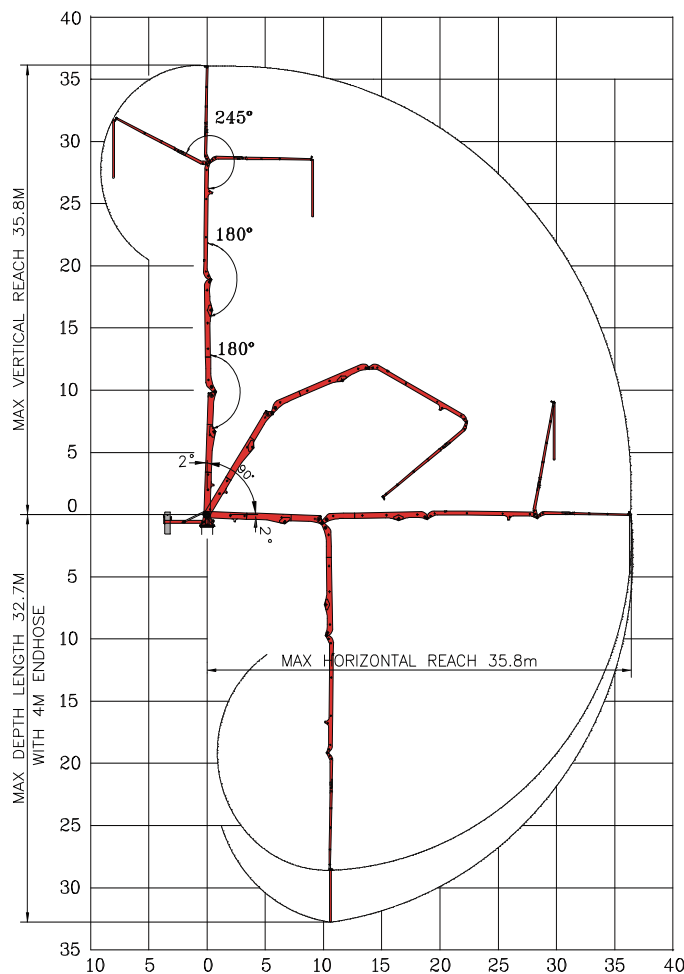
## JB-T36H

Placing System on Tower Mast  
36M 4 Sections R & Fold Designed Boom

### Boom Specification / Technical Specification

Boom Design		R & Fold			
Horizontal Reach		35.8m	Boom Articulation	1st Section	91°
Vertical Reach		35.8m		2nd Section	180°
Reach Depth		32.7m		3rd Section	180°
				4th Section	245°
Boom Length	1st Section	9.3m	Rotation		365°
	2nd Section	8.5m	Delivery Line		DN 125mm(5")
	3rd Section	8.9m	Electric System		AC380V / 60Hz
	4th Section	9.1m	Control Systems		Radio-Cable-Manual
End Hose Length		4.0m			

### Working Diagram



\* All technical data are theoretical values and Specification are subject to change without prior notice.  
\* JUNJIN HEAVY INDUSTRY CO.LTD 33 OSEONRI GEUMWANGU EUMSEONGGUN CHUNBUK, KOREA WWW.JUNJIN.COM



2012-08-23 VER.2

# DATA SHEET

PLACING BOOM

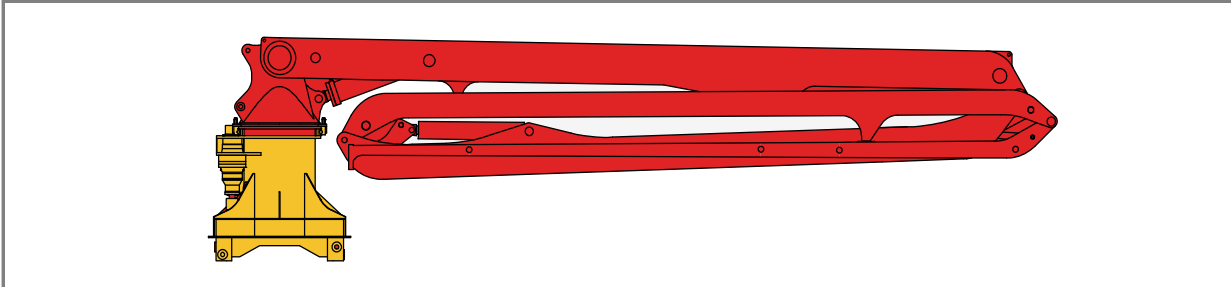


## JB-T36H

Placing System on Tower Mast  
36M 4 Sections R & Fold Designed Boom

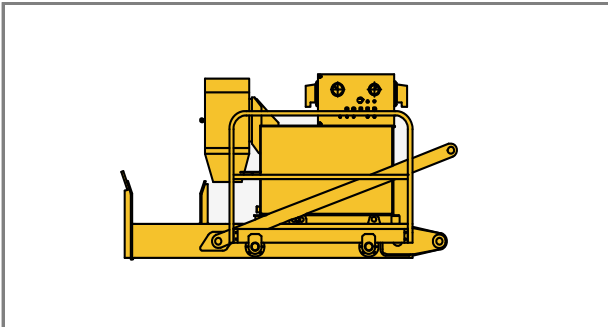
### Standard delivery Scope

#### ▷ Boom ass'y & Turning base



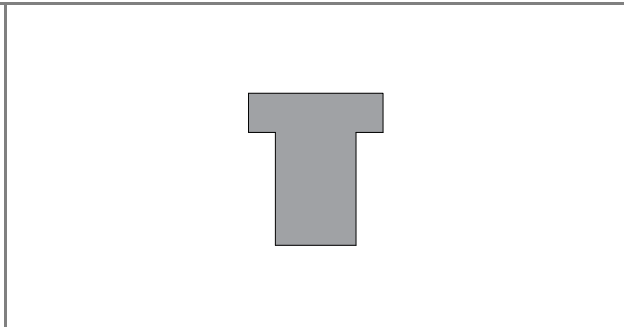
- Weight: 8,920 kg

#### Counter Jib



- Weight : 1,000 kg

#### ▷ Ballast weight



- Weight : 2,100 kg

\* All technical data are theoretical values and Specification are subject to change without prior notice.  
\* JUNJIN HEAVY INDUSTRY CO.LTD 33 OSEONRI GEUMWANGEUP EUMSEONGGUN CHUNBUK, KOREA WWW.JUNJIN.COM